



Heating

CONVECTION PANEL HEATER
OPERATING INSTRUCTIONS



**2 Heat
settings**

Select your level
of warmth



**Adjustable
thermostat**

Set your
comfort level



**Wall
mountable
or castors**



**1 Year
warranty**

For Models No: CELPH100, CELPH200

General Care and Safety Guide

Thank you for choosing a Celsius Convection Panel Heater. This Celsius appliance has been designed and manufactured to high standards of engineering and with proper use and care, as described in this booklet, will give you years of useful service. Please read these instructions carefully and keep for future reference.

1. **WARNING** you must not cover this appliance. Covering this appliance presents fire risk and will activate the safety fuse; permanently disabling the unit.
2. Use only the voltage specified on the rating label of the appliance.
3. Keep all objects at least 1 metre from the front, sides and rear of the appliance.
4. This appliance is intended for household use only and not for commercial or industrial use.
5. Indoor use only.
6. Do not use abrasive cleaning products on this appliance. Clean with a damp cloth (not wet) rinsed in hot soapy water only. Always remove plug from the mains supply before cleaning.
7. The common cause of overheating is deposits of dust or fluff in the appliance. Ensure these deposits are removed regularly by unplugging the appliance and vacuum cleaning the air vents and grills.
8. Always unplug appliance when not in use.
9. When the appliance has been unpacked, check it for transport damage and ensure all parts have been delivered. If parts are missing or the appliance has been damaged, contact the Celsius Customer Services Team.
10. If your appliance does not work, or is not working properly, contact the place of purchase or the Celsius Customer Services Team.
11. Do not connect the appliance to mains supply until completely assembled and adjusted.
12. Ensure hands are dry before handling the plug or main unit.
13. Do not locate the appliance directly below any power socket outlet.
14. Ensure appliance is on a flat, stable, heat-resistant surface.
15. Do not operate with cord set coiled up as a heat build up is likely, which could be sufficient to become a hazard.
16. Carry out regular checks of the supply cord to ensure no damage is evident.
17. Do not operate this appliance with a damaged cord, plug or after the appliance malfunctions or has been dropped or damaged in any manner. Return to a qualified electrical person for examination, electrical service or repair.
18. Do not remove plug from power socket by pulling cord; always grip plug.
19. Do not twist, kink or wrap the cord around the appliance, as this may cause the insulation to weaken and split. Always ensure that all cord has been removed from any cord storage area and is unrolled before use.
20. It is recommended that this appliance is plugged directly into the wall socket. The use of power boards is not recommended as many power boards are not designed to supply power to high wattage appliances.
21. A correctly specified, undamaged extension cord may be used with this appliance provided it is used in a safe manner.
22. Use this appliance only as described in this manual. Any other use is not recommended by the manufacturer and may cause fire, electric shock or injury.
23. Do not remove plug from power socket until the appliance has been switched off.
24. Do not place cord under carpet or cover with rugs or furniture. Arrange the cord so it cannot be tripped over.
25. Do not place appliance on bedding or on thick & long carpet where the openings may get blocked.
26. Switch off and use handle provided when moving.
27. Do not place appliance close to radiant heat source.
28. Never use the appliance to dry clothes.
29. Do not insert or allow foreign objects to enter any ventilation or exhaust opening, as this may cause an electric shock, fire or damage to the appliance.
30. Do not sit on the appliance.
31. Do not operate in areas where petrol, paint or other flammable liquids are used or stored.
32. This appliance is not intended for use by persons (including children) with reduced physical, sensory or mental capabilities or lack of experience and knowledge, unless they are supervised or have been given instruction concerning the use of the appliance by a person responsible for their safety.
33. Children should be supervised to ensure that they do not play with the appliance.
34. Do not use this appliance in the immediate surrounds of a bath, a shower, or a swimming pool or other liquids. The appliance must not be immersed in any liquids.
35. There are no user serviceable parts installed in the unit.
36. Do not place the unit in wardrobes or other enclosed spaces as this may cause fire hazards.
37. This unit is not supposed to be used in or around locations where foodstuffs, works of art or delicate articles of science, etc are stored.

YOUR SAFETY IS IMPORTANT TO US. PLEASE ENSURE YOU TAKE NOTE OF THE INSTRUCTIONS AND WARNINGS OUTLINED IN THIS MANUAL.

Components



Main Body x1
Model CELPH100



Main Body x1
Model CELPH200



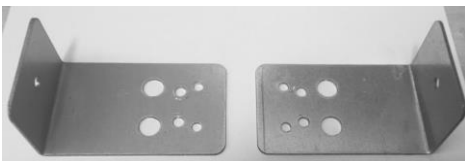
Castor Plate and Castors x 2



Screw Pack



Wall Top Mounting Brackets



Wall Bottom Mounting Brackets

Assembly

Before using this appliance, it must either be wall mounted or have the castor plates and castors fitted. The screw pack to attach the feet to your appliance will be taped to either one of the feet for your appliance, or taped to the plug.

PLEASE NOTE: The screws supplied are one way screws so once screwed in they cannot be unscrewed again.

ASSEMBLY FOR FREESTANDING

Each castor plate supplied with this heater (supplied separately in the carton) requires 3 screws to attach them securely to the heater. Holes are pre-drilled in the base of the heater.

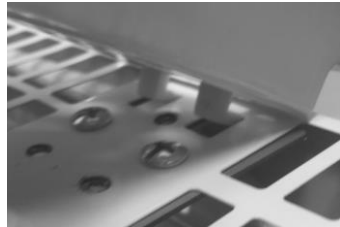
The castor plates come with 3 pre-drilled holes.

Carefully turn the Main Body upside-down on a scratch-free and stable surface. Be careful to prevent damage to the cosmetic finish or your floor surfacing.

Place the plastic lugs on the castor plate into the holes on the bottom of the heater and secure them in position with small screws provided.



Castor plate showing lugs



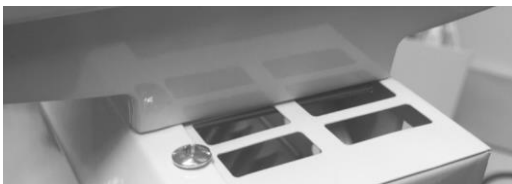
Lugs positioned in bottom of heater



Securing Screw (3 per castor plate)



Screw positions

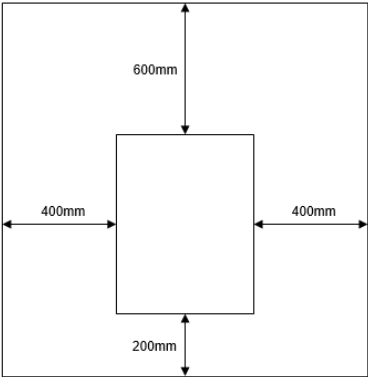


Castor plate securely positioned

INSTALLATION FOR WALL MOUNTING

Position the panel heater within one metre of a wall socket. Do not mount in front of or below the wall socket.

Ensure the heater is mounted at least 200mm above the floor and at least 400mm from anything to the side and 600mm from anything above the heater.



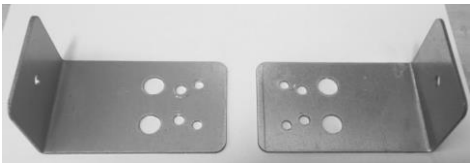
To fix the bracket and install the heater:
First mark the wall where the heater will be installed taking into account safe distances around the heater as shown above.



Wall Top Mounting Brackets

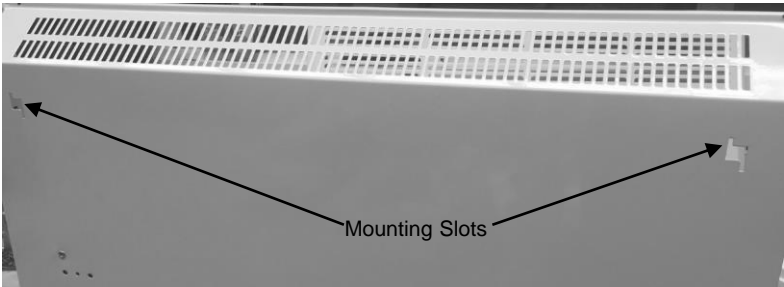


Wall Mounting Screw Set



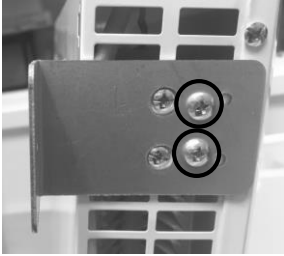
Wall Bottom Mounting Brackets

Measure the distance between the mounting slots on the back of the heater. Now mount one of the wall brackets to the wall so that it is in the right location to hold the heater. Next mount the other bracket to the wall in the correct position to locate the other slot in heater. Ensure they are level. Also ensure these brackets are firmly fastened to the wall.



ASSEMBLY FOR WALL MOUNTING Continued

Secure the “L” shaped wall bottom mounting brackets to the bottom of the heater with the wall mounting part pointing down below the heater as shown below. These mount in the same position as the castor plates except they are only held by 2 screws. These brackets will hold the heater base in the right position from the wall.



Now mount the heater onto the top mounting brackets.

Once the heater is mounted correctly, screw the bottom wall mounting brackets to the wall to secure them.

Operating your Appliance

Always choose a safe location for the heater, keeping in mind the safety precautions outlined. Ensure all packaging has been removed from the unit before use. This appliance requires installation if wall mounted, otherwise it should be used as a portable appliance if freestanding.

WARNING: If wall mounted, keep all objects at least 1 metre from the front and position on the wall as per installation instructions.

If freestanding, keep all objects at least 1 metre from the front, sides and rear of the appliance.

WARNING: In order to avoid overheating or risk of fire, DO NOT COVER the heater.

WARNING: Never leave this heater unattended when in use.

WARNING: Do not use this appliance with a programmer, remote-control system, separate timer or any other device that switches the appliance on automatically.

Note: When the appliance is turned on for the first time, it may release a slight odour or smoke. This odour or smoke is a normal occurrence caused by the initial heating of the internal heating elements and should not occur again.

HEAT CONTROL SWITCH

Check that the heat control switch is set to Off position before plugging the heater into the mains supply. For greater economy, use the High Heat setting initially and then switch to the Low Heat setting.

The power switches are located on the right hand side of the heater below the control panel.

To turn the heater on, switch on the power switch to the setting desired.

To turn the heater off, switch off the power switches.

The control switch positions are:

- 0 = OFF
- I = Low Heat
- II = High Heat



THERMOSTAT

Turn the thermostat knob clockwise until you reach the maximum position on the graduated scale. When the room reaches a comfortable temperature, slowly turn the knob anti-clockwise until the thermostat turns off (you will hear a click). The appliance will now cycle on and off to maintain the set comfort level. Take note of this position setting for future use.



Care and Cleaning

CARE AND CLEANING

The appliance requires regular cleaning to ensure trouble free operation:

Unplug the appliance from the mains supply before cleaning.

Ensure that the appliance has been allowed to cool down completely before cleaning.

Use a damp cloth (not wet) to wipe the exterior of the appliance to remove dust and dirt.

Never use solutions such as benzene, thinners or polishing agents.

Use a vacuum cleaner to remove dust and fluff from around the grills.

Ensure the appliance is dry before plugging back into the mains supply.

Do not attempt to dismantle the appliance. There are no user serviceable parts. For service or repair, contact an authorised electrical service technician.

SAFETY DEVICES

This appliance has two protection devices:

1. Resettable thermal link - this will automatically disconnect the power to the appliance at a pre-set overheat temperature. After cooling down it will reset and power on again. If this occurs, investigate what is causing the appliance to overheat.
2. Thermal fuse - this disconnects the appliance permanently in case of overheating. (It is non resettable).

CAUTION: The appliance generates heat during use. Proper precautions must be taken to prevent the risk of burns, scalds, fires or other damage to persons.

PROOF OF PURCHASE

To receive warranty retain receipt as proof of purchase.

TECHNICAL SPECIFICATION

Model No:	CEPH100,	CELPH200
Supply:	220-240VAC 50Hz	220-240VAC 50Hz
Wattage:	1000W	2000W



SUPPORT AND TECHNICAL ADVICE

Celsius – New Zealand
Monday – Friday 8am-5pm
Phone +64 (0)9 917 4000
Phone 0800 232 633
info@celsius.co.nz

Celsius – Australia
Monday – Friday 8am-5pm
Phone +61 (0)3 9365 5100
Phone 1300 465 324
info@celsiusforhome.com.au



One Year Warranty

Thank you for purchasing this Celsius product. Your product is warranted against faults and manufacture when used in normal domestic use for a period of **one year**. In non-domestic use Celsius limits the voluntary warranty to **three months**.

Celsius undertake to repair or replace this product at no charge if found to be defective due to a manufacturing fault during the warranty period.

This warranty excludes damage caused by misuse, neglect, shipping accident, incorrect installation, or work carried out by anyone other than a qualified electrical service technician.

PLEASE KEEP YOUR RECEIPT AS THIS WILL HELP VERIFY YOUR WARRANTY.

The benefits given to you by this warranty are in addition to other rights and remedies available to you under law in relation to the goods or services to which this warranty relates.

In Australia, our goods come with guarantees that cannot be excluded under the Australian Consumer Law. You are entitled to a replacement or refund for a major failure and compensation for any other reasonably foreseeable loss or damage. You are also entitled to have the goods repaired or replaced if the goods fail to be of acceptable quality and the failure does not amount to a major failure.

In New Zealand this warranty is additional to the conditions and guarantees of the Consumers Guarantee Act (1993).

Celsius – New Zealand

PO Box 100-707
N.S.M.C
Auckland, 0745

Phone +64 (0)9 917 4000
Phone 0800 232 633
www.celsius.co.nz

Celsius – Australia

PO Box 574
South Morang
Victoria, 3752

Phone +61 (0)3 9365 5100
Phone 1300 465 324
www.celsiusforhome.com.au

Celsius One Year Warranty (IMPORTANT: Please complete and retain this warranty card)

Name

.....

Address

.....

.....

.....

Place Of Purchase Date Of Purchase

Name Of Product Model Number

Attach a copy of the purchase receipt to this warranty card

Due to continual design improvements, the product illustrated in this User Manual may differ slightly from the actual product.



Heating

CDB  **GOLDAIR**

New Zealand
PO Box 100-707,
North Shore Mail Centre,
Auckland, 0745
www.celsius.co.nz

Australia
PO Box 574,
South Morang,
Victoria, 3752
www.celsiusforhome.com.au